



2260 NE Hwy 20, STE 610-233
Bend, Oregon 97701
Email: info@DCFWA-LLC.com
Office: 541.330.6182
Cell: 541.598.5044
Fax: 541.330.6183
Web: www.DCFWA-LLC.com

INTRODUCING DCF-LLC

Our services are based on COMPETITIVE WHOLESALe PRICES for Labor & Material packages, Quality Installations & Fast Paced Production geared to meet construction schedules on any type & size of construction project.

Specializing in Apartments, Assisted-Livings, Senior Living Facilities, Hotels, Multi-family projects, Condominiums, Townhomes, Commercial Buildings & Tract or Custom Housing, DCF has 40+ years of solid experience in the Pacific Northwest, southwest & all other western states subcontracting multi-trade labor & material packages on a wide range of projects. Our company only employs qualified & experienced installers and has the manpower, tools & equipment required for the fast-track production schedules of today's construction environment.

Most importantly, we understand the prices and performance needed to meet budgets, expectations & needs of the best general contractors. Our many top references will attest to this fact! DCF would appreciate the opportunity to submit separate, competitive & timely proposals for each trade as follows: Rough Wood Framing, Hardi Siding, Drywall, Metal Framing, Concrete Foundations & Slabs, Steel Erection & Gypsum Concrete. Package discounts for the award of three or more trades is also offered. DCF believes our selection to your team will prove to be a valuable choice! Our longstanding #1 commitment is to satisfy general contractors, owners & lenders.

Give us a call, we'll do our best to prove ourselves at all times! In addition, DCF is mobile, willing to travel & our Material Prices are Direct Mill Wholesale & based on 100% accurate takeoffs which we guarantee.

DCF-LLC is licensed, bonded & insured in Oregon, Washington, Idaho, Montana, Wyoming & Colorado.

Thank You!

DCF-LLC

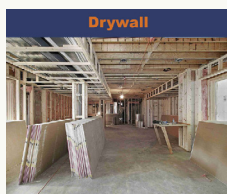
OR #228338 * WA #DCFVAL*817PQ * Idaho #RCE-34035 * MT #246288



Rough Framing



Siding



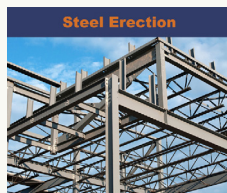
Drywall



Metal Framing



Concrete Foundations



Steel Erection



Concrete Slabs



Gypsum Concrete



Hotels



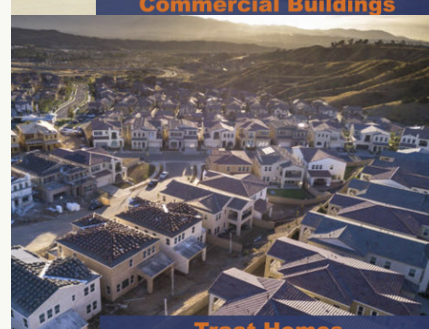
Apartments



Assisted Livings



Commercial Buildings



Tract Homes

See our portfolio at www.DCFWA-LLC.com
In Washington dba DCFWA-LLC